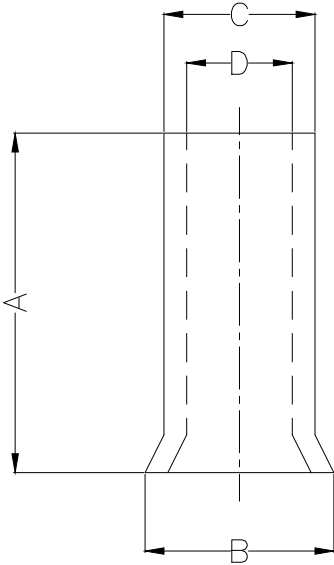


1 2 3 4 5 6 7 8

REV	LOCATIONS	DESCRIPTION	DATE	REVISER	APPD

Notes:

Material: Copper  
 Plating: Bright tin plated  
 Maximum temperature: 75°C  
 Maximum electrical rating: 600V  
 Wire range: 25mm<sup>2</sup> / (4AWG)



Dimensions			
A	B	C	D
±1	±0.5	±0.5	±0.5
16.0	9.1	7.9	7.5

A

B

C

D

E

F

A

B

C

D

E

F

1 2 3 4 5 6 7 8

<p>THIRD ANGLE PROJECTION</p>	GENERAL TOLERANCES (UNLESS SPECIFIED)		APPROVE BY	DATE	PART NO.	ITEM NO.	<p>Building Technology Cornerstone</p>	
	X. ±0.30	X.* ±5'	LEO	17/JAN/21	FET01-025001600B0N8	FET01		
	DESIGN UNITS mm		CHECKED BY	DATE	TITLE		REV 0	SHEET NO. 1/1
	X.X ±0.20	X.X' ±2'	GISELLE	17/JAN/21	Cord end terminal			
SCALE 5:1	SIZE A4	X.XX ±0.15	X.XX' ±1'	DRAWN BY	DATE	THIS DRAWING CONTAINS INFORMATION THAT IS PROPRIETARY TO TXGA INDUSTRIAL ELECTRONICS(S.Z)CO.,LTD AND SHOULD NOT BE USED WITHOUT WRITTEN PERMISSION		
		X.XXX ±0.10	X.XXX' ±0.5'	PYD	17/JAN/21			